

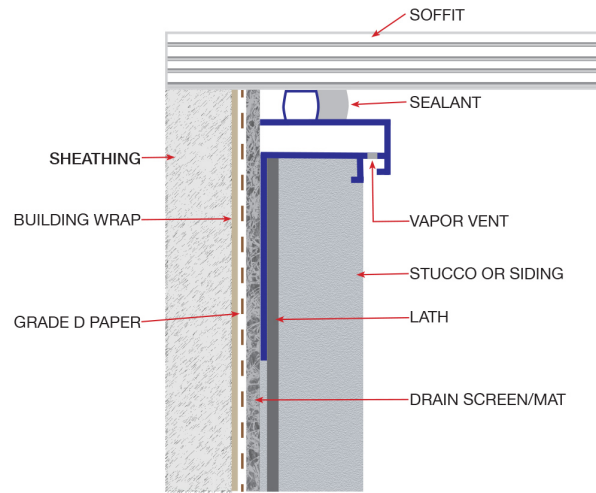
HYDRODRY E-Z VENT™

FOR STUCCO AND PLASTER INSTALLATIONS

E-Z Vent is a vinyl HI-PERFORMANCE trim that allows the top of a wall to properly vent and release unwanted water vapor from within the wall cavity through a series of venting slots. AMICO's exclusive diverter design prevents water or driving rain from entering the wall cavity. A unique flexible bulb provides a flawless caulk joint to the soffit while the applied bond breaker tape allows for two point adhesion ensuring long term health of the sealant joint. An integrated ground provides a guide to allow for the proper stucco thickness.



Product Submittal	Product Number	Color
	HDEZVV20078010	White
	HDEZVV20078010G	Gray
	HDEZVV20078010T	Tan
3/8" Flexible Backer Rod		
7/8" Ground		
Standard Length is 10-Feet		



All butt joints, intersections, and ends should be joined, embedded and sealed in a quality sealant compatible with exterior paint finish.

FINISH

The finish on all AMICO vinyl stucco accessories is compatible with standard lathing and paint finishes.

COLORS

Standard color is white. This profile can be specified and ordered with the exposed area in tan or gray.



REFERENCES

PVC complies with ASTM D4316 and ASTM D1784
 Meets IBC 2510 and IBC 2511
 Refer to ASTM C1063 for support spacing, lath selection, fastener selection and further information regarding the proper installation of metal lath and accessories.
 Meets Buy American Procurement Requirements
 Made in the United States of America
 LEED: 100% post industrial recyclable content

All information contained herein is accurate as known at the time of publication. Specifications may change and AMICO reserves the right to change product specifications without notice and without incurring obligations.

ALABAMA METAL INDUSTRIES CORPORATION

3245 Fayette Avenue ◊ Birmingham, AL 35208 ◊ Telephone 800/366-2642 ◊ Facsimile 205/786-6527

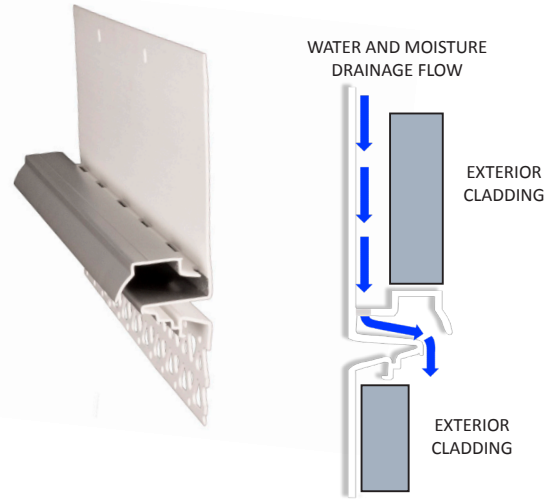
HYDRODRY MID-WALL WEEP SCREED

FOR STUCCO AND PLASTER INSTALLATIONS

AMIFLOW Mid-Wall Drain Screed has integrated drain slots to allow water and excess moisture to escape from the back of a stucco membrane. This screed also performs as an expansion (control) joint with multiple grounds. It is typically installed where a framed stucco surface meets a masonry (concrete block) stucco surface. This condition is common between floors on 2-story homes and at the base of a gable receiving stucco.

The flange features pre-punch attachment holes every 4" for easy installation. The 3-1/2" nailing flange also offers plenty surface area to tie the trim into the weather plane of the wall. The weather barrier, drain screen and lath should be installed over the solid upper flange to direct water to the foundation weep screed. The profile is manufactured with a 3 1/2" nailing flange as required by code.

All butt joints, intersections, and ends should be joined, embedded and sealed in a quality sealant compatible with exterior paint finish.



FINISH

The finish on all AMICO vinyl stucco accessories is compatible with standard lathing and paint finishes.

COLORS

Standard color is white. This profile can be specified and ordered with the exposed area in tan or gray.



Product Submittal	Product Number	Color
	HDAMDWV35078010	White
	HDAMDWV35078010G	Gray
	HDAMDWV35078010T	Tan
Manufactured with a 3 1/2" Nailing Flange as Required by IBC 2510, 2511		
Grounds Top: 7/8", Bottom: 1/2", 5/8", 7/8", 1 1/4"		
Standard Length is 10-Feet		

REFERENCES

PVC complies with ASTM D4316 and ASTM D1784

Meets IBC 2510 and IBC 2511

Refer to ASTM C1063 for support spacing, lath selection, fastener selection and further information regarding the proper installation of metal lath and accessories.

Meets Buy American Procurement Requirements

Made in the United States of America

LEED: 100% post industrial recyclable content

All information contained herein is accurate as known at the time of publication. Specifications may change and AMICO reserves the right to change product specifications without notice and without incurring obligations.

ALABAMA METAL INDUSTRIES CORPORATION

3245 Fayette Avenue ◊ Birmingham, AL 35208 ◊ Telephone 800/366-2642 ◊ Facsimile 205/786-6527

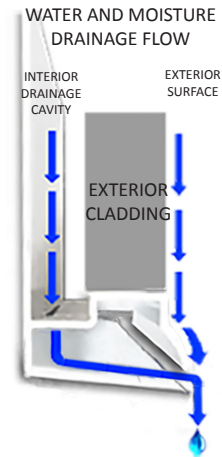
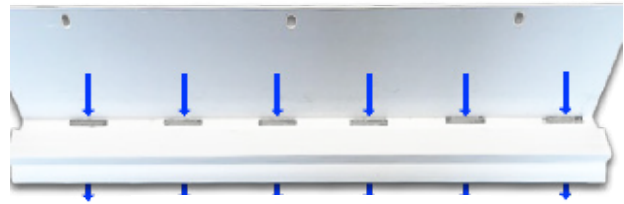
HYDRODRY AMIFLOW UD

FOR STUCCO AND PLASTER INSTALLATIONS

AMIFLOW UD Is a vinyl HI-PERFORMANCE trim profile that provides drainage for sill stones, roof pitches, and base of wall applications. The UD features drainage trough for proper Rain Screen Termination and an integrated ground for the proper stucco thickness. The key feature is the vented moisture trough which allows rain screen to be inserted to maintain the drain-age cavity throughout the wall.

All butt joints, intersections, and ends should be joined, embedded and sealed in a quality sealant compatible with exterior paint finish.

This bead is required by most building codes in the United States. Check with local building codes for the proper clearance for the weep screed placement above grade.



Product Submittal	Product Number	Color
	HDAUDV35078010	White
	HDAUDV35078010G	Gray
	HDAUDV35078010T	Tan
Manufactured with a 3½" Nailing Flange as Required by IBC 2510, 2511		
7/8" Ground		
Standard Length is 10-Feet		

FINISH

The finish on all AMICO vinyl stucco accessories is compatible with standard lathing and paint finishes.

COLORS

Standard color is white. This profile can be specified and ordered with the exposed area in tan or gray.



REFERENCES

PVC complies with ASTM D4316 and ASTM D1784
 Meets IBC 2510 and IBC 2511
 Refer to ASTM C1063 for support spacing, lath selection, fastener selection and further information regarding the proper installation of metal lath and accessories.
 Meets Buy American Procurement Requirements
 Made in the United States of America
 LEED: 100% post industrial recyclable content

All information contained herein is accurate as known at the time of publication. Specifications may change and AMICO reserves the right to change product specifications without notice and without incurring obligations.

ALABAMA METAL INDUSTRIES CORPORATION

3245 Fayette Avenue ◊ Birmingham, AL 35208 ◊ Telephone 800/366-2642 ◊ Facsimile 205/786-6527



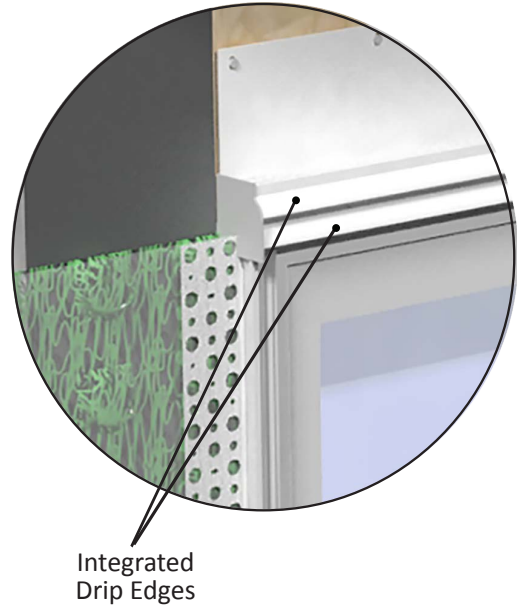
HYDRODRY AMIFLOW DRIP EDGE

FOR STUCCO AND PLASTER INSTALLATIONS

AMIFLOW Drip Edge is a vinyl HI-PERFORMANCE trim profiles provide a straight, true, continuous surface that will drain and ventilate the wall cavity above windows, doors and garage doors. It can also be used in conjunction with the E-Z Vent for a 2 piece Mid-Wall installation. The High Performance trims integrate many features to simplify installation providing guides to help installers maintain the proper stucco thickness. The key feature is the vented moisture trough which allows rain screen to be inserted to maintain the drainage cavity throughout the wall.

All butt joints, intersections, and ends should be joined, embedded and sealed in a quality sealant compatible with exterior paint finish.

This bead is required by most building codes in the United States. Check with local building codes for the proper clearance for the weep screed placement above grade.



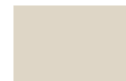
Product Submittal	Product Number	Color
	HDADEV35078010	White
	HDADEV35078010G	Gray
	HDADEV35078010T	Tan
Manufactured with a 3½" Nailing Flange as Required by IBC 2510, 2511		
7/8" Ground		
Standard Length is 10-Feet		

FINISH

The finish on all AMICO vinyl stucco accessories is compatible with standard lathing and paint finishes.

COLORS

Standard color is white. This profile can be specified and ordered with the exposed area in tan or gray.



tan



gray

REFERENCES

PVC complies with ASTM D4316 and ASTM D1784

Meets IBC 2510 and IBC 2511

Refer to ASTM C1063 for support spacing, lath selection, fastener selection and further information regarding the proper installation of metal lath and accessories.

Meets Buy American Procurement Requirements

Made in the United States of America

LEED: 100% post industrial recyclable content

All information contained herein is accurate as known at the time of publication. Specifications may change and AMICO reserves the right to change product specifications without notice and without incurring obligations.

ALABAMA METAL INDUSTRIES CORPORATION

3245 Fayette Avenue ◊ Birmingham, AL 35208 ◊ Telephone 800/366-2642 ◊ Facsimile 205/786-6527